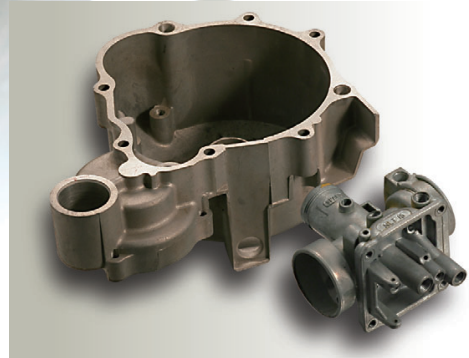
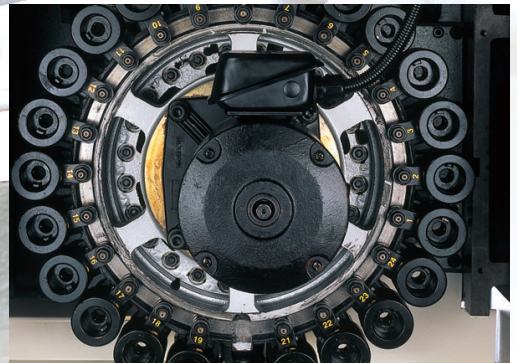


RMV-500APC/RMV-700APC

Super High Precision Tapping Center

Essential for Massive Production Machining
Cycle Time Down, Profit Up!

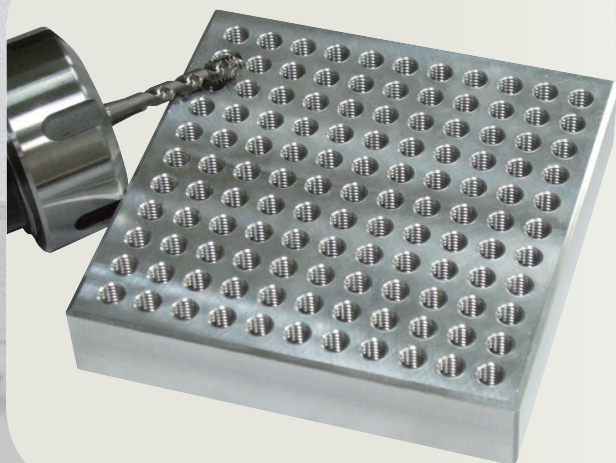


HIGH SPEED MANUFACTURING

EXCELLENT FOR LOW COST JOB & LARGE BATCH PRODUCTION

RMV-500APC

- Max. spindle speed **22000** rpm (option)
- Max. rigid tapping **8000** rpm (option, refer to tool application.)
- Max. rapid traverse **96** m/min
- Max. acceleration **1.5~2.0** G
- Fastest tool change
T to T **0.7** sec. ~ **1.2** sec.
- Pallet change time **1.5**/ 180° sec.



Tapping (121 holes)

Machine Model : RMV-500APC

Workpiece material : Aluminum (A5052)

Tapping Speed : 4000 min

Tool Used : M6-1 Tap

Effective thread : 12mm

Machining time for 1 hole : 0.92 sec/hole

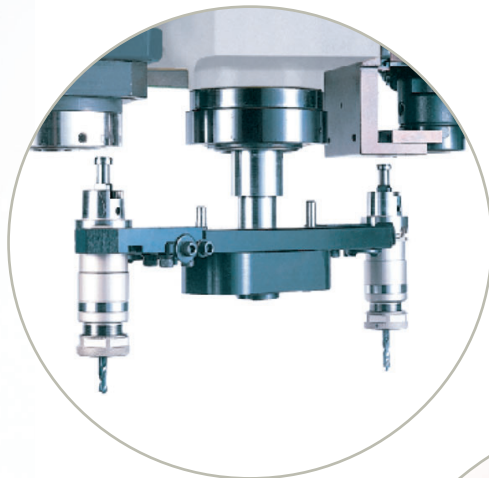
(Tapping motion only)

AKIRA-SEIKI® CONCEPT 1

Reduce Down Time = Save More Profit ●●●●●●●●●●
Less Waste = Profit

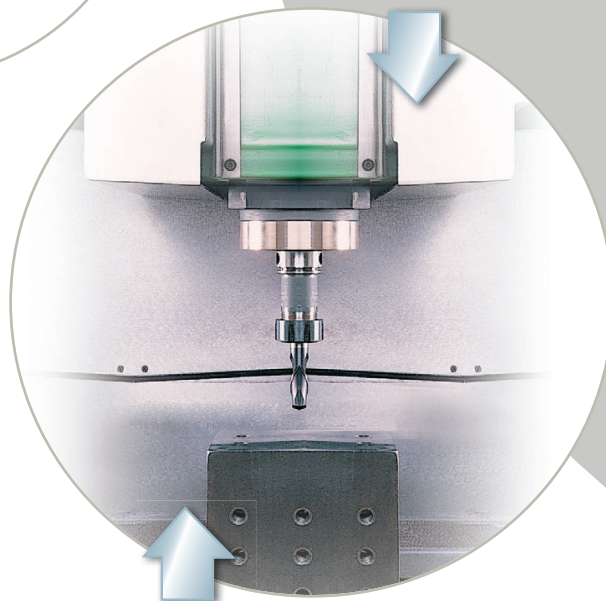
▼ **Absolute direct drive spindle** prevents radial load of spindle bearings and results long bearing life, least noise and save efficient power transmission.

Super low inertia main motor to achieve **spindle speed from 0 to 22000rpm within 0.45 seconds.**
(optional features for RMV-500APC)



▼ High speed tool changer has tool to tool change time of 0.7 second and chip to chip of 2.1 seconds. More than 1.5 million reliable & practical operation ATC had been done.

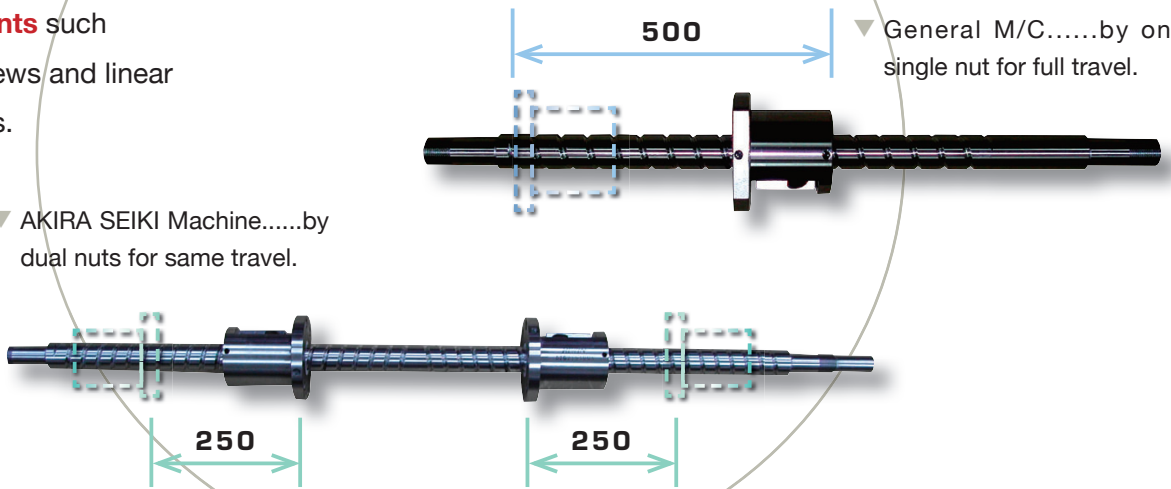
▼ Patented relative movement technology enables high acceleration by **1.2~1.5G** at least (RMV-500APC). When reach the machining coordinate in the fastest cycle, the opposite feeding force is counteracted and **machine body stays sable as a rock.**



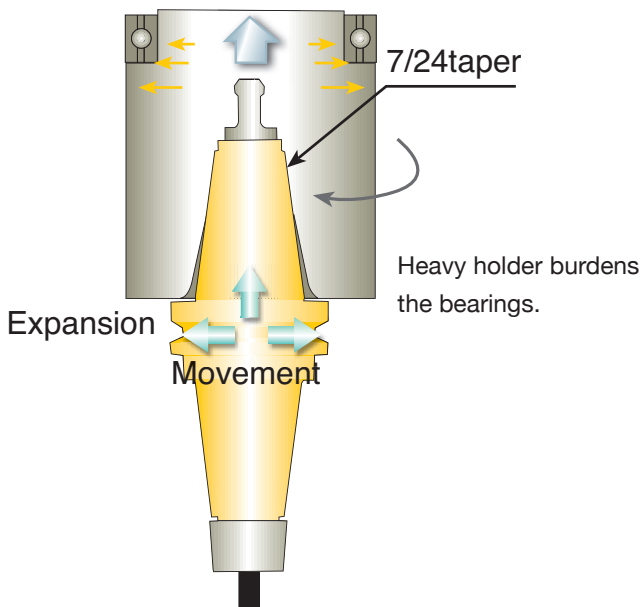
Low Service Expense & Consuming Effective ●●●●●●●●●●

▼ For the same travel as standard machine, AKIRA SEIKI RMV series transmission travel only **50%** of the distance. It therefore ensures **200% longevity of motion for components** such as ballscrews and linear guideways.

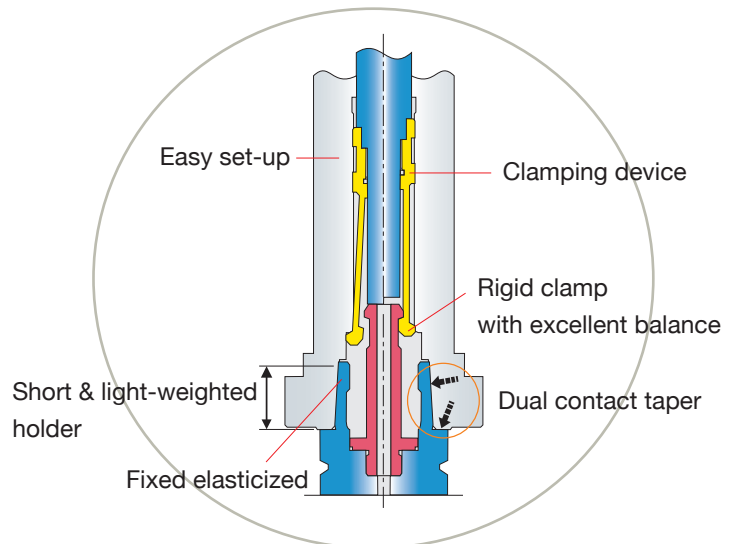
▼ AKIRA SEIKI Machine.....by dual nuts for same travel.



▼ Unstable balance of BT system in high speed.



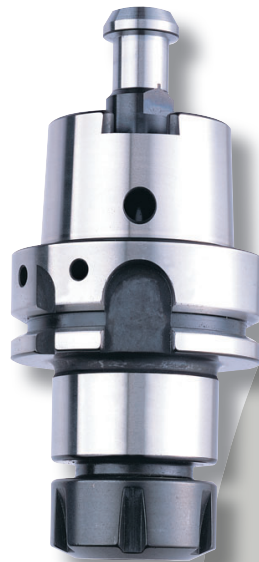
▼ Standard HSK dual contact taper ensures rigid clamping of tool holders at high speed. It guarantees accurate holding of cutting tool and prevents locking of holder due to thermal expansion caused due to heat generated by spindle at high speeds.



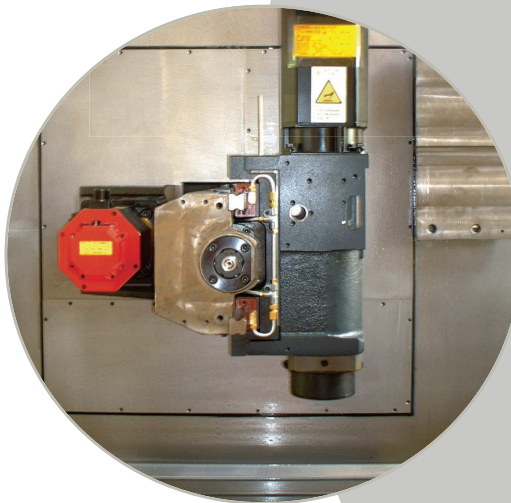
Simplified Structure = Less Breakdown & Low Service Cost

- Akira Seiki HSK Patented Tooling System

- ▼ To activate the advantage of HSK tooling system in most significant economy, HSK excellent dynamic balance while high speed cutting. Akira Seiki patents concepts popularize the perfect tooling system in the most economic solution. Not necessary and complicated to use expensive HSK clamping device.



- ▼ X,Y and Z axes are completely isolated from chips by the unique design of the machine. High quality one piece sliding cover is used on X and Z axis. This prevents breakdowns due to telescopic cover damage caused by high rapid traverse.

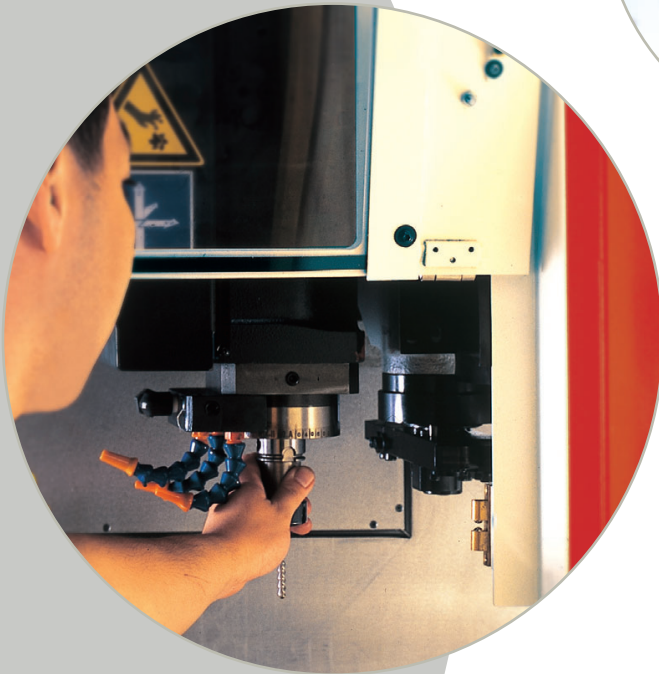
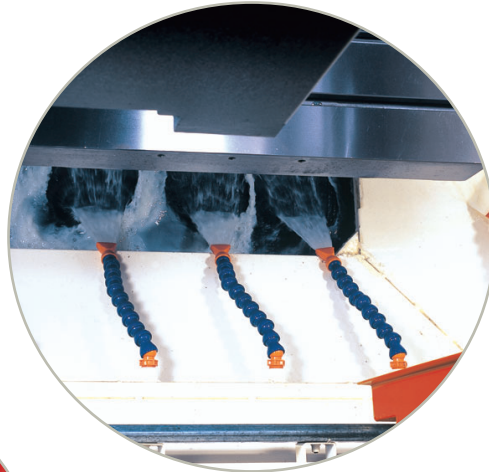


- ▼ **Servo drive tool magazine** for quickest tool select.
- ▼ **Electrical clamp** for ATC brake ensures precise tool change in short temple.
- ▼ Isolated tool magazine prevent chips entering tool pot.

Attentive to Operator's Demand ●●●●●●●●

· Chip disposal

- ▼ To meet the high production of aluminum parts, powerful chip flush together with large volume of coolant tank is provided as standard.



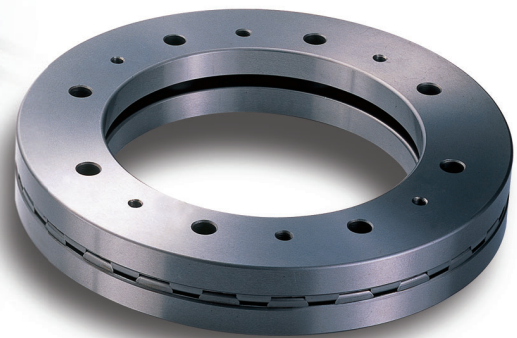
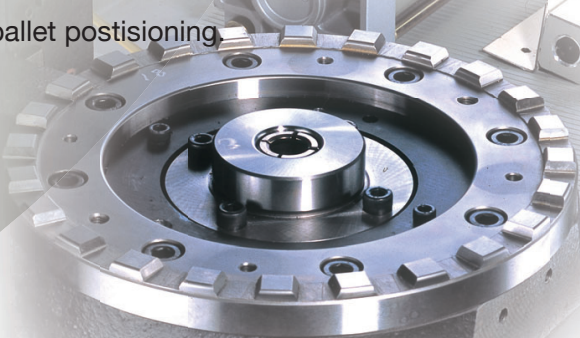
· Ergonomics

- ▼ The distance between spindle centre and operator is only 550 mm with front type pallet changer. (RMV-500 APC)

· Unique pallet changer

- ▼ High precision curvic coupling is used for the precised positioning of pallet that is usually standard only in high end machines.
- ▼ Optimum **chip proof system and detect system (patented)** ensure accuracy stability of pallet postioning.

No hydraulic components are used for pallet clamp / unclamp that reduced additional maintenance cost.



AKIRA-SEIKI® CONCEPT 4

Environmental & Utility Options

- Lube Coolant Separation (Optional)
 - ▼ Optional separation of lubricant and coolant helps in protection of working environment.
- Floor space
 - ▼ The foot print of AKIRA SEIKI is really small which economizes the power and generates machine productivity.
- Rotary Table (Option)
 - ▼ Rotary tables on both pallets are available on A500T / A-650 APC models.
- Oil Mist Spray for Dry Cutting (Optional)
 - ▼ Dry cutting with high pressure oil spray provides full lubrication of end tools. Long life of tools and better cutting surface, especially good chip off while tapping job on aluminum.

Measurement:

	RMV-500APC	RMV-700APC
A	1500	1900
B	2030	2250
C	2700	3200
D	2315	2300
E	2820	2936

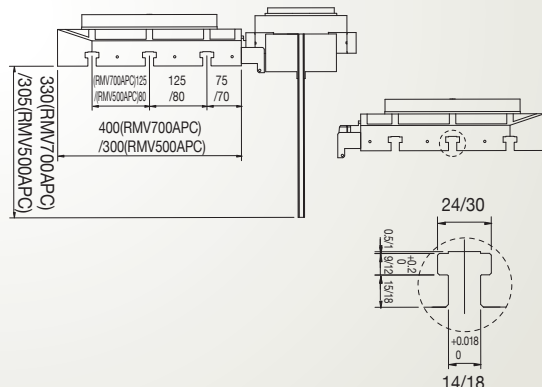
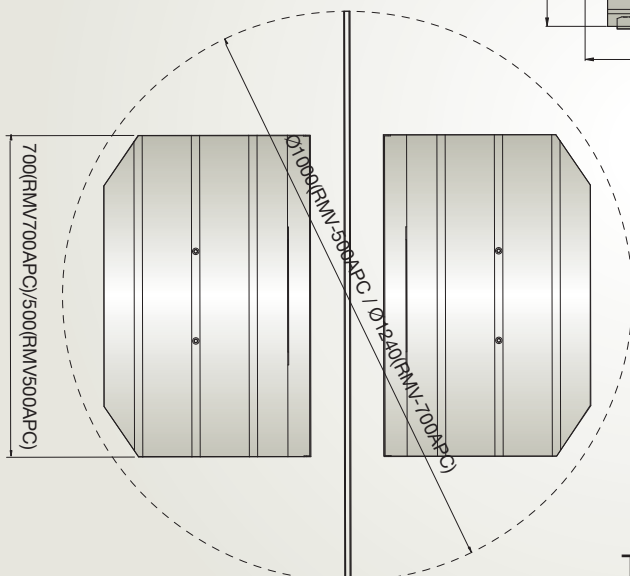
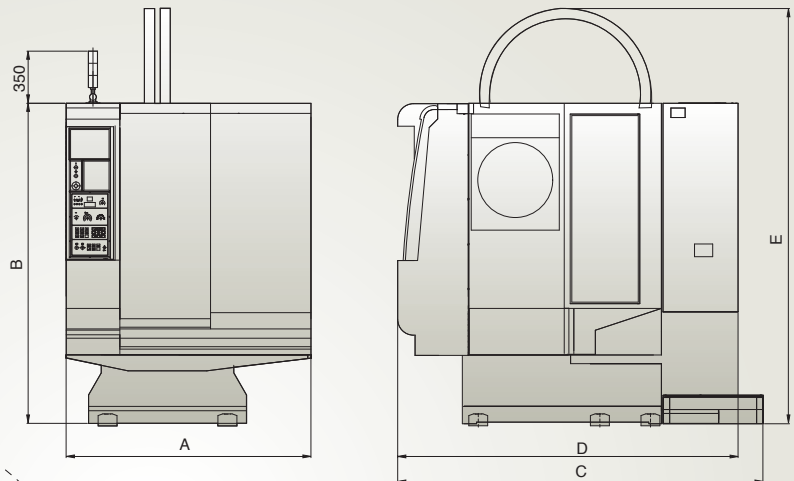


Table of RMV-500APC/RMV-700APV

Machine specification			RMV-500APC	RMV-700APC
CNC Control System				
Travel	X-axis	mm	500	700
	Y-axis	mm	300	400
	Z-axis	mm	280	400
	Spindle nose to table surface	mm	150-430	200-600
Pallet	Size	mm	500 x 300	700 x 400
	Loading capacity	Kgs	100	160
	Chang time (Rotation)	sec.	1.5 / 180°	2.5 / 180°
Spindle	Speed range	rpm	15-15000 22000 (Opt.)	10-12000 15000 (Opt.)
	Motor max output (2min rate)	HP/Nm	10HP/14.3Nm	15HP/10Nm
	Acceleracion to max. speed	sec	0.45	1.8
Speed	Rapid feed rate X*Y*Z	m/min	60 x 60 x 96	48 x 60 x 96
	Cutting feedrate	mm/min	1-10000	1-10000
	Max. acceleration X/Y/Z	G	1.2 / 1.2 / 1.5	1.0 / 1.0 / 1.2
Tool	Type of tool shank	-	HSK-40A BT-30 (Opt.)	HSK-63A BT-40 (Opt.)
	Tool storage capacity	Tools	24+1	24+1
	Max. diameter/length/weight	mm/mm/Kg	ø50 / 175 / 2.5	ø75 / 200 / 4.5
	Change time	sec	T/T:0.7 / C-C:2.1	T/T:1.2 / C-C:3.4
Capacity (refer to tool application)	Max. drilling	mm	15	25
	Tapping capacity		M14	M24
	Max. tapping speed	rpm	6000 8000 (Opt.)	4000
	Coolant container	L	160	160
Power	Power capacity	KVA	10	25
	Total power connected	A	40	75
	Air connected	bar	6	6
	Air flow capacity	L/min	100	100
Size	Floor space	mm	1500 x 2660	1900 x 3200
	Machine weight	Kgs	4200	5600

*All specification subject to change without notice

Quality and Core Technology..



AKIRA SEIKI Co., Ltd

1st Factory No. 40-2, 34th Road, Taichung Industrial Park, Taichung 407, Taiwan, R.O.C.

2nd Factory No. 306, 38th Road, Taichung Industrial Park, Taichung 407, Taiwan, R.O.C.

TEL: +886 4 2355 2495

FAX: +886 4 2355 2496

E-mail: akira.seiki@msa.hinet.net

http://www.akiraseiki.com

AKIRA - SEIKI®
PRECISION CNC MACHINE TOOLS



255 CAPITOL ST., LIVERMORE, CA 94551, USA

TEL: +1 925 443 1200 FAX: +1 925 443 1290